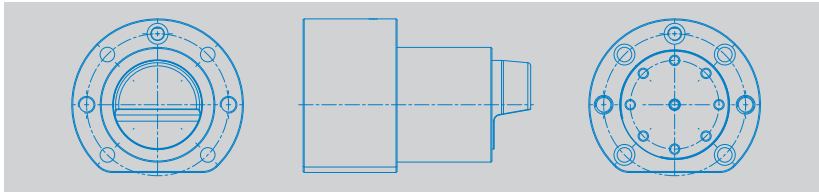


## Components



### 1. Clamping elements (hydromechanical and double-hydraulic)

- 1.01 Hydromechanical wedge-type clamping element for embedding in baseplates
- 1.02 Hydromechanical wedge-type clamping element for placement on baseplates
- 1.03 Hydromechanical cylinder insert wedge-type clamping element
- 1.04 Double-hydraulic pull-down clamping element for embedding in baseplates

### 2. Lifting elements (hydromechanical and double-hydraulic)

- 2.01 Hydromechanical lifting cylinder
- 2.02 Double-hydraulic lifting cylinder
- 2.03 Hydromechanical lifting roller

### 3. Pillar, diagonal and flat guides (with exchangeable wear elements)

- 3.01 Pillar guides
- 3.02 Diagonal guides
- 3.03 Flat guides

→ Components

→ Products

→ Range of Products and Services