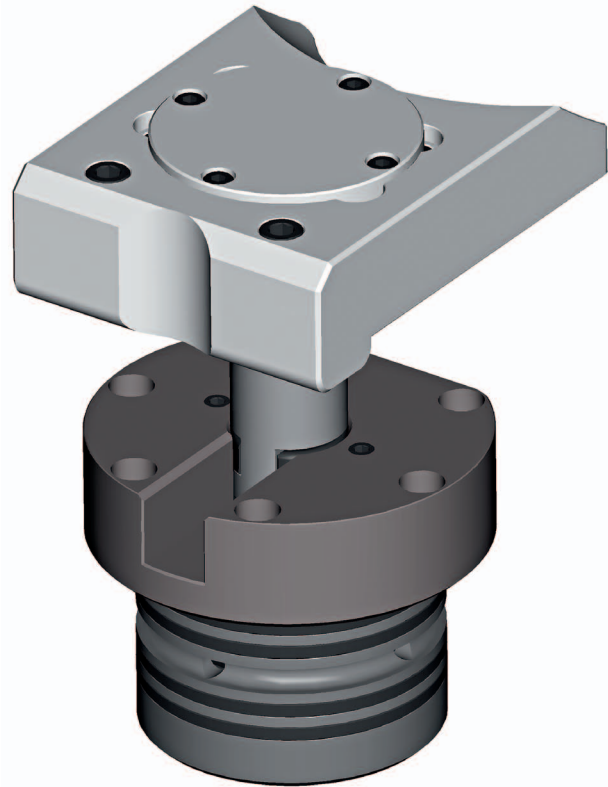


1.04 Double-hydraulic pull-down clamping element for embedding in baseplates



Double-hydraulic pull-down clamping element for clamping forging dies, trimming, punching and calibrating tools

- Universally usable double-hydraulic pull-down clamping element for clamping forging dies, trimming, punching and calibrating tools, for embedding in baseplate locating cylinders.
- Special, robust construction for use under the particularly high demands in the field of massive forming, i.e. highly resistant to mechanical, thermal and chemical loads.
- Series and variant design: different sizes, clamping claw shapes and clamping forces for use in 3 MN to 16 MN presses.
- Clamping claw shape can be adapted to special requirements.
- Advanced work safety thanks to hydraulic clamping pressure inquiry.



Double-hydraulic pull-down clamping elements, at front without pull-down rods and forging die clamping claws, in a round forging dieholder lower section of a Fellner forging die quick-change system for a 6.5 MN drop forging wedge press (view from front left top)



Double-hydraulic pull-down clamping elements in a round forging dieholder lower section of a Fellner forging die quick-change system for a 6.5 MN drop forging wedge press with clamped round forging die lower section dummies (view from front left top)