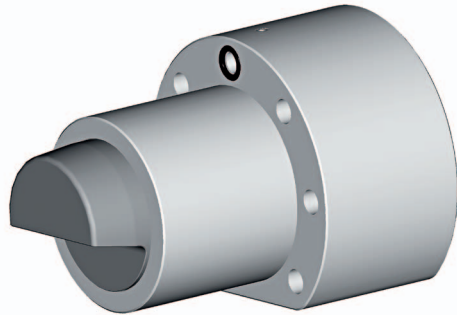


## 1.03 Hydromechanical cylinder insert wedge-type clamping element



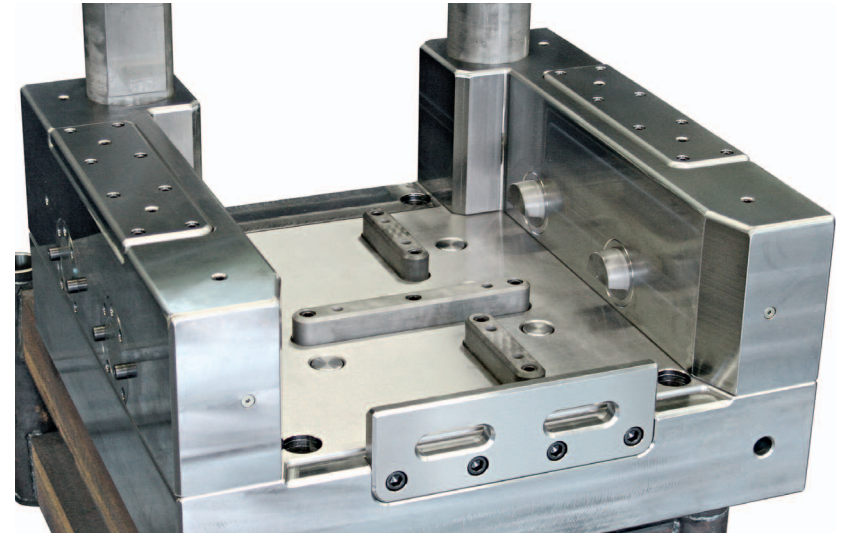
Hydromechanical cylinder insert wedge-type clamping element for clamping dieholder cassettes, trimming, punching and calibrating tools

- Universally usable hydromechanical cylinder insert wedge-type clamping element for clamping dieholder cassettes, trimming, punching and calibrating tools, for insertion in a locating cylinder, e.g. in a dieholder cassette clamping shoulder.
- Special, robust construction for use under the particularly high demands in the field of massive forming, i.e. highly resistant to mechanical, thermal and chemical loads.
- Series and variant design: different sizes, shapes and clamping forces for use in 5 MN to 80 MN presses.
- Clamping element housing and clamping piston shape can be adapted to special requirements.
- Advanced work safety thanks to hydromechanics (mechanical clamping - hydraulic releasing), self-locking of the clamping piston and the option of an electrical or hydraulic clamping piston position inquiry.

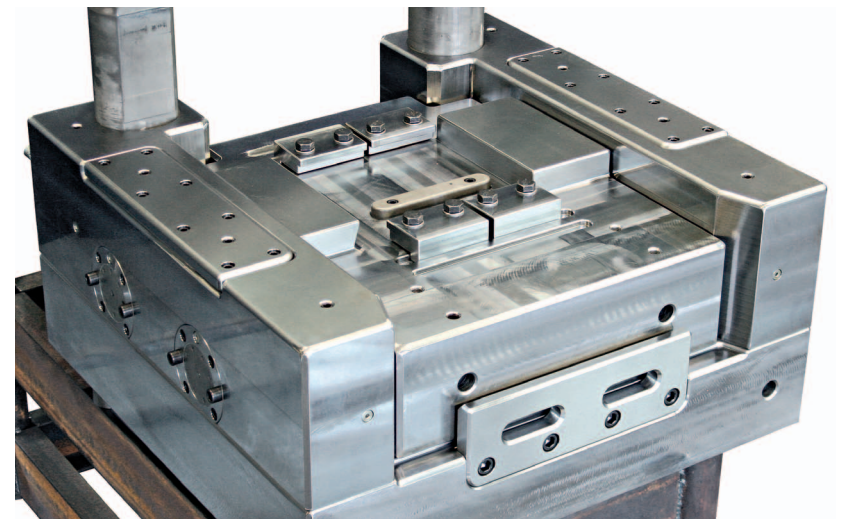
→ Components

→ Products

→ Range of Products and Services



Hydromechanical cylinder insert wedge-type clamping elements in the cassette clamping shoulders of the base holder lower section of a Fellner dieholder cassette quick-change and precision forging system for a 10 MN drop forging screw press (view from front left top)



Hydromechanical cylinder insert wedge-type clamping elements in the cassette clamping shoulders of the base holder lower section of a Fellner dieholder cassette quick-change and precision forging system for a 10 MN drop forging screw press, with clamped rectangular forging die cassette lower section (view from front left top)